

Roosevelt Railroad

Rail-with-Trail Multi-Use Study

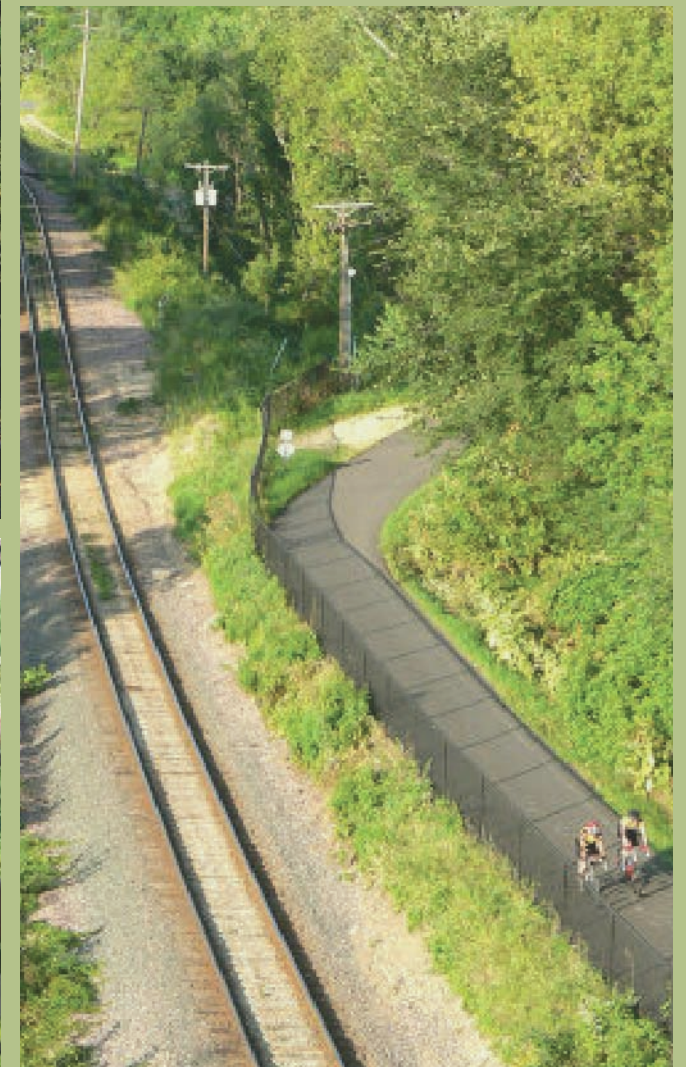
Spalding County, Georgia

DRAFT

September, 2010



Mary Alice Alnutt



MASTER PLAN

Acknowledgements

Spalding County Commissioners

Eddie Freeman
Edward Goss
Gwen Flowers-Taylor
David Phillips
Bob Gilreath

Technical Committee

Chuck Taylor, Spalding County
Frederick Gardiner, City of Griffin
Adam Causey, City of Griffin
Elton Rosser, Roosevelt Railroad Museum
John Rivers, Roosevelt Railroad Museum
Lyuba Zuyeva, Atlanta Regional Commission
Byron Rushing, GDOT Bike-Ped Coordinator
Ben Liverman, University of Georgia
Kevin Kirsche, University of Georgia
Cheri Matthews, Henry County
Kelly Proctor, Henry County Water and Sewer Authority
Jane Curtis, Mineva
Matt Stokes, Pulte Group

Stakeholder Committee

Andrew Heath, GDOT Planner
Florence Kulp
Bob Gilreath, Spalding County Board of Commissioners
Bobby Peurifoy
Bonnie Pfrogner, Griffin Area Chamber of Commerce
Brant Keller, City of Griffin Public Works
Bruce Ballard, Griffin-Spalding County School System
Carolyn Byrd, Downtown Development Authority Main Street
Chuck Taylor, Community Development Director, Spalding County
David Luckie, Griffin-Spalding Dev. Authority
David Millen, District 3 Engineer
Dick Morrow, Commissioner, City of Griffin
Don King, Express Personnel
Doug Hollberg, Commissioner, City of Griffin
Dwayne L. Jones, Griffin Police Department
Eddie Freeman, Spalding County Board of Commissioners
Frank Harris
James Clinkscales, Griffin Fire Department
Kenny L. Smith, City Manager, City of Griffin
Kimberly Larson, District 3 Public Relations Coordinator, Department of Transportation
Lanier Boatwright, McIntosh Trail RDC
Lyubov Zuyeva, Planner, Atlanta Regional Commission
Michelle Cannon
Neal Bonds
Representative John Yates, State House District 73
Representative David Knight, State House District 126
Samuel C. Gardner, Spalding County Fire Chief
Senator John Douglas, State Senate District 17
Senator Ronnie Chance, State Senate District 16
Tom Queen, District 3 Planning & Programming Engineer, Department of Transportation
Wendell Beam, Spalding County Sheriff's Department
William P. Wilson, Jr., Spalding County Manager

Planning Team

Spalding County

Anthony Dukes, Project Manager

Tunnell-Spangler-Walsh & Associates

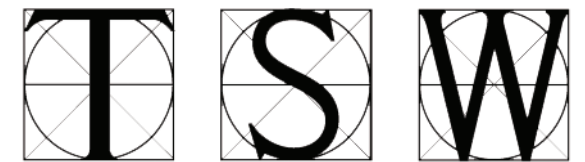
Adam Williamson, AICP, Project Manager
Jia Li, AICP

Alta Planning + Design

John Cock, AICP
Maya Agarwal, Designer

Croy Engineering

Daniel B. Dobry, Jr., P.E., PTOE
Don Hutchins, R.L.S.
Michelle McIntosh
Marissa Cronic



TUNNELL-SPANGLER-WALSH & ASSOCIATES



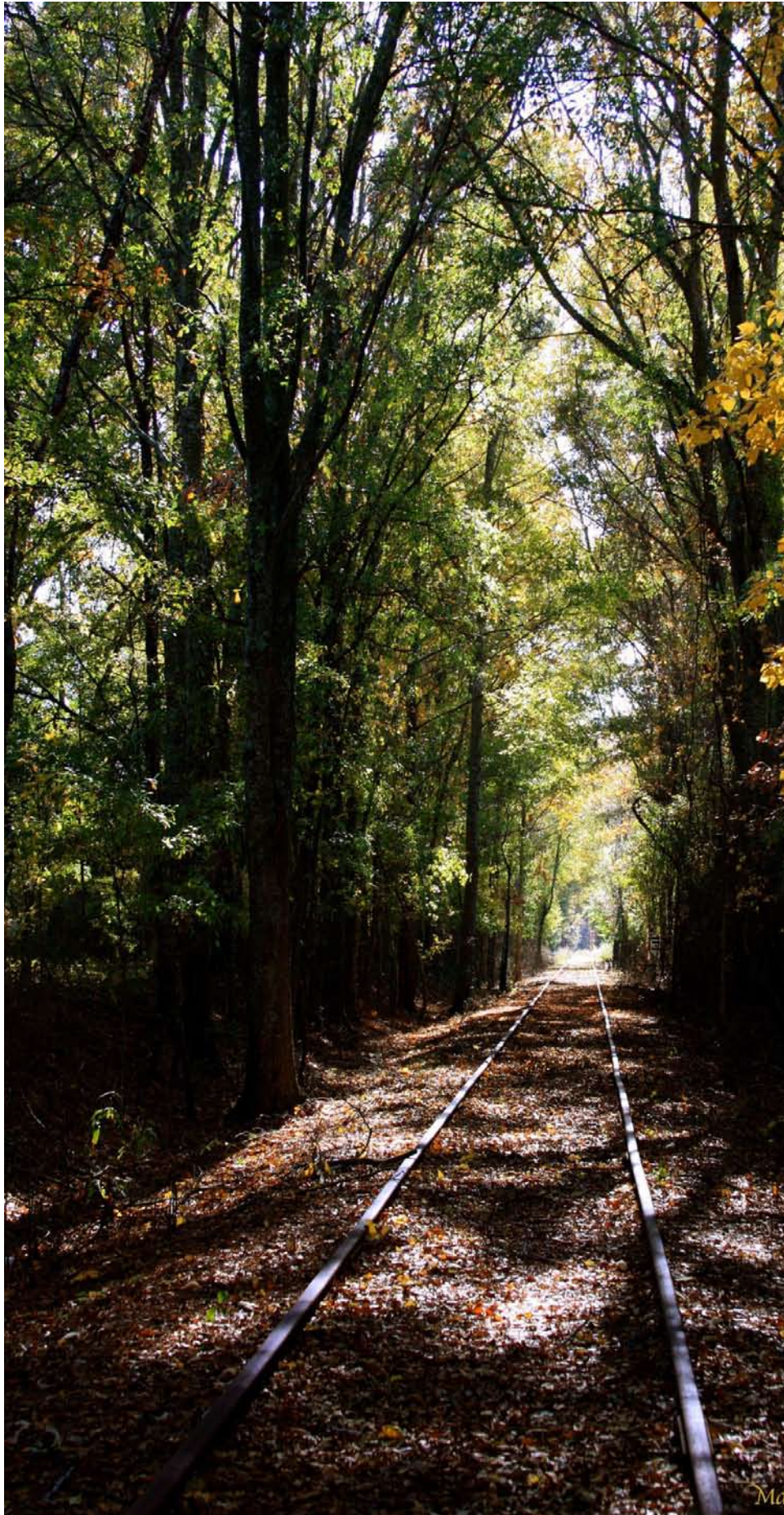


Table of Contents

1. Existing Conditions..... 1

2. Site Analysis21

3. Visioning35

4. Recommendations41

Appendix

I. Study Area Property Ownership

II. Environmental Analysis Report

III. Structural Analysis Report

IV. Public Involvement Document

Meeting Postcards & Flyers

Public Meeting Agendas

Public Meeting Sign-In Sheets

Public Meeting Minutes

V. Detailed Cost Estimates

VI. Trail Plan and Profile

VII. Scope of Services for Utility Coordination

